

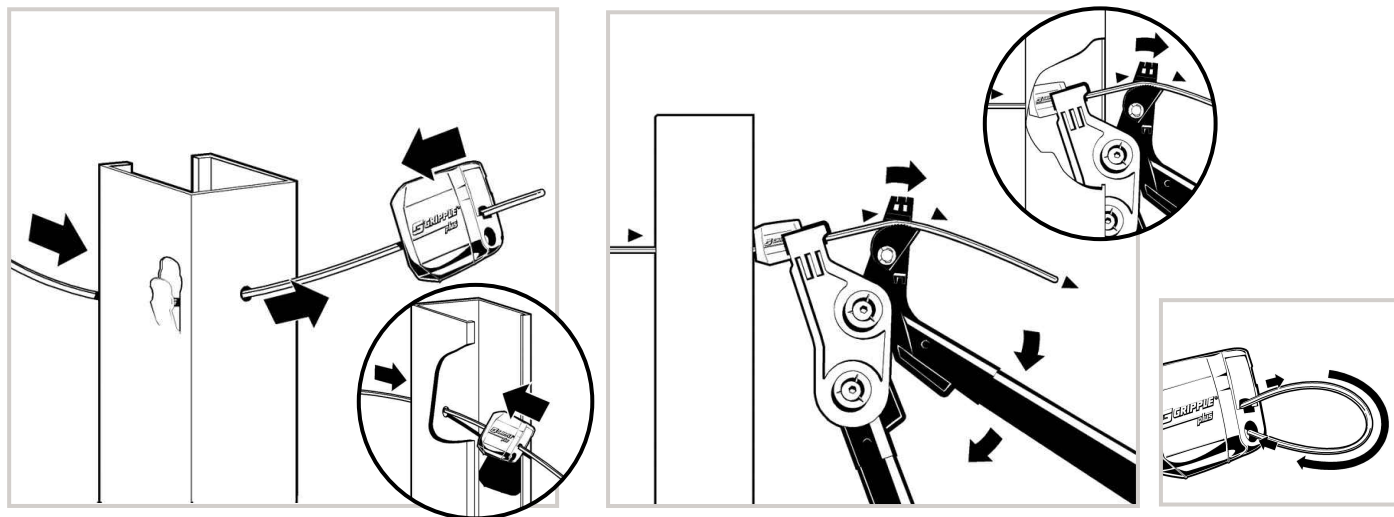
The GP No.1 is Gripple's answer to terminating trellis wire at a metal end post.

## ADVANTAGES

- Join and tension the wire in one.
- Easy re-tensioning after each harvest.
- Up to 4 times faster than knotting.
- Engineered as a single channel to support loads up to 400kg.
- Safety channel for hazard-free work.
- Tension as normal, with the Gripple Torq Tensioning Tool.



## INSTALLATION



## SPECIFICATION

Product	Wire diameter	Wire gauge - ga	Max Load
Gripple Plus No.1	1.80 - 3.00mm	11 - 5	400kg

## TIPS

- Loop the tail wire back into the blank channel for safety.

