

GripplE Plus Anchor Kits (Vineyard)

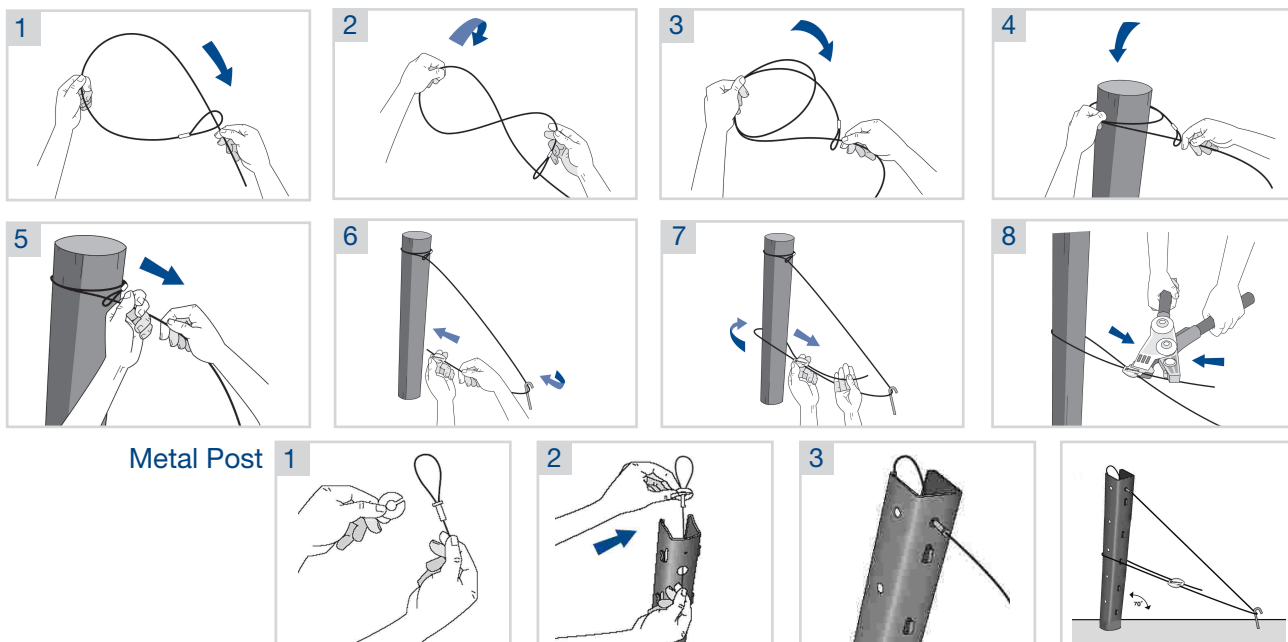
A complete anchor kit, ready-to-use with cut to length pre-ferruled wire rope and GripplE unit.

ADVANTAGES

- Time and labour saving.
- Universal end fixing for use on wooden and metal posts.
- Heavy galvanisation for maximum corrosion resistance.
- Double anchor format for maximum strength.
- Tension using the GripplE Torq Tensioning Tool.
- Neat, professional finish.
- Re-tension easily year-after-year.

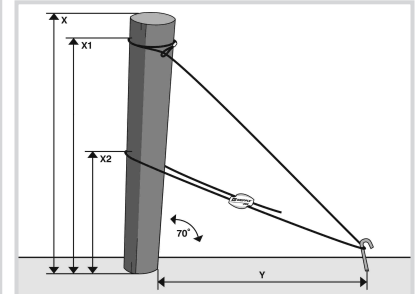


INSTALLING



SPECIFICATION

Post height	Anchor distance from post	Wire - X1	Wire - X2
1.5m / 5'	1.25 - 1.50m / 4' - 5'	1.4m / 4.6'	0.75m / 2.5'
1.6m / 6'	1.25 - 1.50m / 4' - 5'	1.7m / 5.6'	0.90m / 3.0'
2.0m / 6'6"	1.25 - 1.50m / 4' - 5'	1.9m / 6.3'	1.00m / 3.3'



TIPS

- Why not try the GPAK/Fenox total anchor solution offered by GripplE. The ideal anchor for stony ground combined with the fast-fit GPAK is the intelligent total anchoring solution.
- Always tension on the tail wire so as not to damage the coating on the active wire rope.
- Install in a 'V' shape to spread the load, make tensioning easier and adding to the strength of the complete trellis.